

## The Measurement Appointment

Help the child feel comfortable; if possible, conduct the session in an area that provides privacy and discretion.

- Complete the three required measurements on the form and reference the guide below.
  - Circumference
  - Ear-to-ear
  - Front-to-back
- Select:
  - One (1) most comfortable cap size.
  - One (1) color
  - Length for Female (12" OR 14") – Length for Male (6")



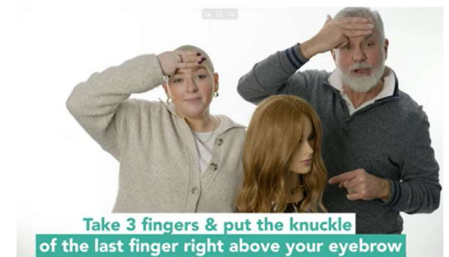
Cap Size	Circumference	Ear to Ear	Front to Back
6XS	18	10.875	10.875
5XS	18.5	11.25	11.25
4XS	19	11.625	11.625
3XS	19.5	12	12
2XS	20	12.5	12.5
XS	20.375	13	13
SM	20.75	13.25	13.25
REG	21.25	13.5	13.75

- Please **refrain from writing notes** on the form or making requests outside of the options provided, as we are unable to accommodate them.
- Ensure the parent/guardian reviews all selections. *Forms must include signed approval from both the Service Provider and the child's parent/guardian for processing.*
- The family will take all package contents with them to complete additional paperwork and return the required items to Wigs For Kids as soon as possible.

---

## Tips for Choosing the Correct Cap

- **Fit Test:** Have the child try on the trial caps from the packet. The correct cap should sit flat against the scalp with no air pockets at the crown and no “buckling” at the nape.
- **Front-to-Back Application:** Hold the front of the cap at the forehead and gently stretch it over the head toward the nape.
- **Align the Hairline:** The cap edge should sit exactly at the natural hairline—do not cover the eyebrows/brow bone or place too far back.



## Adjusting for Proper Fit

- **Tuck and Smooth:** Tuck the cap “ears” behind the ears and smooth out any air bubbles using your palms.
- **The “Shake Test”:** Have the child gently shake their head—if the cap shifts significantly, it’s likely too large.
- **Check the Tension:** The cap should feel snug (similar to a swim cap), without causing a squeezing sensation or leaving deep marks
- **Because we are a 501(c)(3) nonprofit, we cannot provide repairs or replacements. This step is essential**